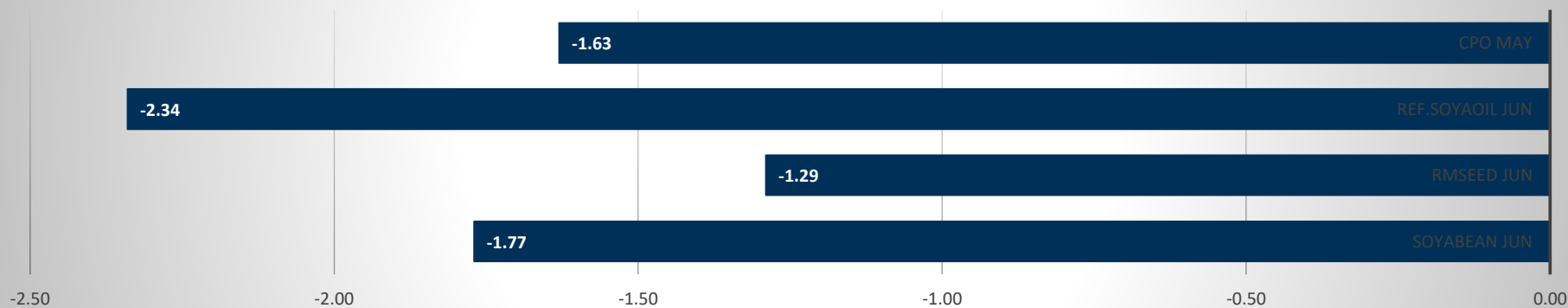


Commodity	Open	High	Low	Close	Rs.Chg	% Chg	Spot	Vol	OI	OI Chg	OI STATUS
Soyabean Jun	7233.00	7400.00	7200.00	7268.00	-131.00	-1.77	7693.00	26960	53880	1.35	Fresh Selling
Rmseed Jun	7200.00	7245.00	7124.00	7198.00	-94.00	-1.29	7325.00	40500	66850	-1.20	Long Liquidation
Ref.Soyaoil Jun	1429.00	1448.00	1401.00	1407.50	-33.70	-2.34	1490.00	53775	36415	-6.29	Long Liquidation
Cpo May	1240.00	1248.80	1198.00	1208.20	-20.00	-1.63	1262.30	3661	3478	-18.64	Long Liquidation

Commodity	Daily Levels								Trend	Performance			
	Close	Res - 3	Res - 2	Res - 1	Pivot	Sup - 1	Sup - 2	Sup - 3		1 Week	1 Month	3 Month	1 Year
Soyabean Jun	7268.00	7578.0	7489.0	7378.0	7289.0	7178.0	7089.0	6978.0	Negative	-4.16	7.54	34.16	47.99
Rmseed Jun	7198.00	7375.0	7310.0	7254.0	7189.0	7133.0	7068.0	7012.0	Negative	-0.01	10.39	26.91	41.82
Ref.Soyaoil Jun	1407.50	1484.0	1466.0	1437.0	1419.0	1390.0	1372.0	1343.0	Negative	-2.56	5.72	20.52	45.72
Cpo May	1208.20	1289.4	1269.1	1238.6	1218.3	1187.8	1167.5	1137.0	Negative	-0.54	5.51	16.23	50.12

Price Movement



DAILY SOYABEAN SYPNOSIS

Expiry	Open	High	Low	Close	Rs.Chg	% Chg	Spot	Vol	OI	OI Chg	Fut-Spot	OI STATUS
18 JUN 2021	7233.00	7400.00	7200.00	7268.00	-131.00	-1.77	7693.00	26960	53880	1.35	-425.00	Fresh Selling
20 JUL 2021	6862.00	7090.00	6850.00	6913.00	-143.00	-2.03	7693.00	4745	13315	5.97	-780.00	Fresh Selling
20 AUG 2021	6705.00	6745.00	6705.00	6727.00	105.00	1.59	7693.00	125	580	20.83	-966.00	Fresh Buying

- Soyabean trading range for the day is 7089-7489.
- Soyabean prices dropped after reports India's soybean planting could rise by over 10% on record prices
- Farmers seen switching away from pulses, cotton
- Production depends on June-Sept monsoon rains
- At the Indore spot market in top producer MP, soybean dropped -26 Rupees to 7693 Rupees per 100 kgs.

CHART



TECHNICALS

Simple Moving Average

5 Days	10 Days	20 Days	50 Days	100 Days	200 Days
7504	7402	7304	6345	5501	4791
SELL	SELL	BUY	BUY	BUY	BUY

Exponential Moving Average

5 Days	10 Days	20 Days	50 Days	100 Days	200 Days
7421	7383	7186	6516	5819	5143
SELL	SELL	BUY	BUY	BUY	BUY

Spread

Month	Rate	JUN	JUL	AUG
JUN	7268		-355	-541
JUL	6913			-186
AUG	6727			

DAILY RMSEED SYNOPSIS

Expiry	Open	High	Low	Close	Rs.Chg	% Chg	Spot	Vol	OI	OI Chg	Fut-Spot	OI STATUS
15 JUN 2021	7200.00	7245.00	7124.00	7198.00	-94.00	-1.29	7325.00	40500	66850	-1.20	-127.00	Long Liquidation
20 JUL 2021	7200.00	7270.00	7146.00	7216.00	-90.00	-1.23	7325.00	7970	13410	11.84	-109.00	Fresh Selling
20 AUG 2021	7262.00	7283.00	7196.00	7213.00	-128.00	-1.74	7325.00	2210	5390	-4.77	-112.00	Long Liquidation

- Rmseed trading range for the day is 7068-7310.
- Mustard seed prices dropped after U.S. rapeseed production is forecast to reach a record 1.8 million tons
- Pressure also seen as Canada rapeseed production is projected at 20.5 million tons, up 1.5 million on greater area.
- European Union rapeseed production is projected to show a modest gain in 2021/22 on increased planted area and improved yield
- In Alwar spot market in Rajasthan the prices gained 105 Rupees to end at 7325 Rupees per 100 kg.

CHART



TECHNICALS

Simple Moving Average

5 Days	10 Days	20 Days	50 Days	100 Days	200 Days
7434	7226	7126	6323	6001	5778
SELL	BUY	BUY	BUY	BUY	BUY

Exponential Moving Average

5 Days	10 Days	20 Days	50 Days	100 Days	200 Days
7380	7273	7045	6549	6181	5774
SELL	BUY	BUY	BUY	BUY	BUY

Spread

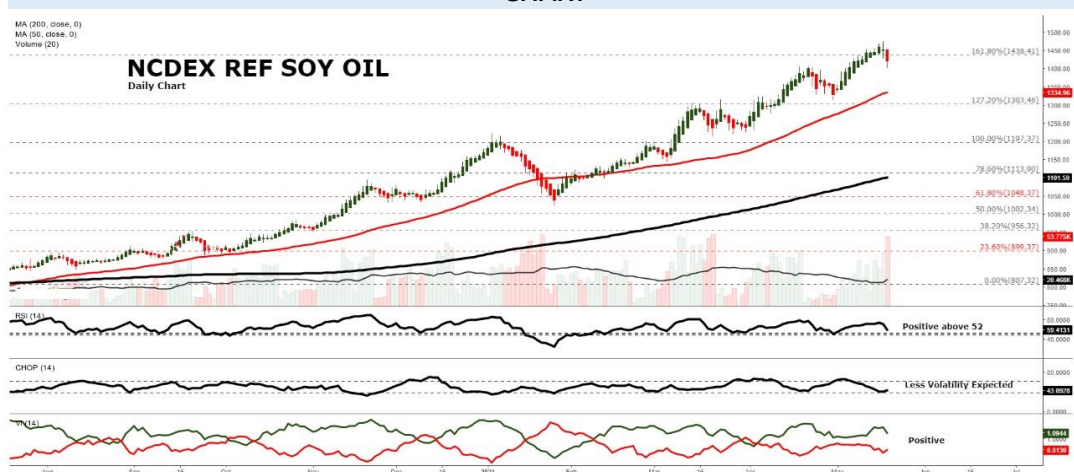
Month	Rate	JUN	JUL	AUG
JUN	7198		18	15
JUL	7216			-3
AUG	7213			

DAILY SOYOIL SYPNOSIS

Expiry	Open	High	Low	Close	Rs.Chg	% Chg	Spot	Vol	OI	OI Chg	Fut-Spot	OI STATUS
15 JUN 2021	1429.00	1448.00	1401.00	1407.50	-33.70	-2.34	1490.00	53775	36415	-6.29	-82.50	Long Liquidation
20 JUL 2021	1410.50	1421.00	1376.30	1381.30	-39.50	-2.78	1490.00	2750	6745	3.69	-108.70	Fresh Selling
20 AUG 2021	0.00	0.00	0.00	0.00	0.00	0.00	1490.00	0	0	0.00	-1490.00	Long Liquidation

- Ref.Soya oil trading range for the day is 1372-1466.
- Ref soyoil prices dropped as higher soybean output could limit edible oil imports.
- Indian farmers are likely to expand their soybean planting area by more than a tenth in 2021
- Global oilseed production is forecast to grow 5 percent in 2021/22, primarily on growth in soybean output in the United States and South America.
- At the Indore spot market in Madhya Pradesh, soyoil was steady at 1490 Rupees per 10 kgs.

CHART



TECHNICALS

Simple Moving Average

5 Days	10 Days	20 Days	50 Days	100 Days	200 Days
1449.6	1438.7	1417.5	1338.8	1240.2	1099.5
BUY	BUY	BUY	BUY	BUY	BUY

Exponential Moving Average

5 Days	10 Days	20 Days	50 Days	100 Days	200 Days
1446.8	1436.6	1412.5	1343.3	1256.5	1140.4
BUY	BUY	BUY	BUY	BUY	BUY

Spread

Month	Rate	JUN	JUL	AUG
JUN	1407.5		-26.2	-1407.5
JUL	1381.3			-1381.3
AUG	0.0			

DAILY CRUDE PALM OIL SYPNOSIS

Expiry	Open	High	Low	Close	Rs.Chg	% Chg	Spot	Vol	OI	OI Chg	Fut-Spot	OI STATUS
15 JUN 2021	1240.00	1248.80	1198.00	1208.20	-20.00	-1.63	1262.30	3661	3478	-18.64	-54.10	Long Liquidation
30 JUN 2021	1175.50	1214.60	1165.60	1180.30	-18.30	-1.53	1262.30	3393	4141	16.85	-82.00	Fresh Selling
30 JUL 2021	1181.80	1187.50	1144.40	1151.20	-34.30	-2.89	1262.30	164	79	-48.03	-111.10	Long Liquidation

- CPO trading range for the day is 1167.5-1269.1.
- Crude palm oil dropped as MPOB reported Malaysian palm oil stock near 15.5 lakh tons by the end of April against market expectation of 15 lakh tons.
- India's palm oil imports in 2021 are set to fall for the second consecutive year as pandemic concerns continue to unfold in the country.
- India's imports of palm oil imports jumped 82% in April on the year
- In spot market, Crude palm oil dropped by -18.7 Rupees to end at 1262.3 Rupees.

CHART



TECHNICALS

Simple Moving Average

5 Days	10 Days	20 Days	50 Days	100 Days	200 Days
1242.8	1223.7	1217.7	1164.3	1078.2	950.1
BUY	BUY	BUY	BUY	BUY	BUY

Exponential Moving Average

5 Days	10 Days	20 Days	50 Days	100 Days	200 Days
1240.7	1230.7	1213.0	1162.4	1089.6	983.9
BUY	BUY	BUY	BUY	BUY	BUY

Spread

Month	Rate	MAY	JUN	JUL
MAY	1208.2		-27.9	-57.0
JUN	1180.3			-29.1
JUL	1151.2			

SOYABEAN PRICE MOVEMENT SINCE 2011

Year						Sowing	Growth	Harvesting					Crop Calendar
	JAN	FEB	MAR	APR	MAY	JUN	JUL	AUG	SEP	OCT	NOV	DEC	
2011	2474.50	2408.00	2338.50	2415.50	2372.00	2294.00	2445.50	2410.50	2090.00	2178.50	2243.50	2514.00	140.00
	4.23	-2.69	-2.89	3.29	-1.80	-3.29	6.60	-1.43	-13.30	4.23	2.98	12.06	5.90
2012	2451.50	2668.50	3085.50	3625.00	3404.00	3968.50	4370.50	3947.50	3201.50	3298.00	3209.50	3203.00	689.00
	-2.49	8.85	15.63	17.49	-6.10	16.58	10.13	-9.68	-18.90	3.01	-2.68	-0.20	27.41
2013	3287.50	3324.50	3641.00	3932.00	3810.00	3670.50	2973.00	3470.00	3531.00	3925.00	3860.00	3819.00	616.00
	2.64	1.13	9.52	7.99	-3.10	-3.66	-19.00	16.72	1.76	11.16	-1.66	-1.06	19.23
2014	3926.50	4165.00	4311.50	4777.50	4592.00	4094.00	3639.00	3358.00	2963.00	3289.00	3300.00	3366.00	-453.00
	2.81	6.07	3.52	10.81	-3.88	-10.84	-11.11	-7.72	-11.76	11.00	0.33	2.00	-11.86
2015	3434.00	3406.00	3458.00	4025.00	3890.00	3329.00	3160.00	3218.00	3429.00	3909.00	3907.00	3880.00	514.00
	2.02	-0.82	1.53	16.40	-3.35	-14.42	-5.08	1.84	6.56	14.00	-0.05	-0.69	15.27
2016	3726.00	3664.00	4010.00	3927.00	3835.00	3740.00	3557.00	3257.00	3235.00	3114.00	3116.00	3029.00	-851.00
	-3.97	-1.66	9.44	-2.07	-2.34	-2.48	-4.89	-8.43	-0.68	-3.74	0.06	-2.79	-21.93
2017	3092.00	3007.00	2941.00	3002.00	2762.00	2925.00	3154.00	3097.00	3033.00	2823.00	3098.00	3118.00	89.00
	2.08	-2.75	-2.19	2.07	-7.99	5.90	7.83	-1.81	-2.07	-6.92	9.74	0.65	2.94
2018	3685.00	3802.00	3756.00	3669.00	3549.00	3566.00	3392.00	3222.00	3233.00	3269.00	3354.00	3399.00	281.00
	18.18	3.18	-1.21	-2.32	-3.27	0.48	-4.88	-5.01	0.34	1.11	2.60	1.34	9.01
2019	3826.00	3637.00	3681.00	3676.00	3718.00	3671.00	3582.00	3825.00	3939.00	3863.00	4072.00	4436.00	1037.00
	12.56	-4.94	1.21	-0.14	1.14	-1.26	-2.42	6.78	2.98	-1.93	5.41	8.94	30.51
2020	4084.00	3708.00	3796.00	3810.00	3830.00	3714.00	3780.00	4116.00	3866.00	4263.00	4415.00	4606.00	170.00
	-7.94	-9.21	2.37	0.37	0.52	-3.03	1.78	8.89	-6.07	10.27	3.57	4.33	3.83
2021	4644.00	5078.00	5993.00	7107.00									2501.00
	0.83	9.35	18.02	18.59									54.30
Average	1.48	0.61	4.39	6.05	-2.89	-1.85	-1.23	-0.14	-3.80	4.69	1.94	2.82	Average

RMSEED PRICE MOVEMENT SINCE 2011

Year	Growth		Harvesting			Sowing							Crop Calendar
	JAN	FEB	MAR	APR	MAY	JUN	JUL	AUG	SEP	OCT	NOV	DEC	
2011	2993.00	2924.00	2739.00	2806.00	2944.00	2901.00	3017.00	2997.00	2858.00	3104.00	3194.00	3311.00	318.00
	0.70	-2.31	-6.33	2.45	4.92	-1.46	4.00	-0.66	-4.64	8.61	2.90	3.66	10.62
2012	3346.00	3632.00	3925.00	4130.00	3901.00	3990.00	4397.00	4452.00	3927.00	4269.00	4214.00	3544.00	233.00
	1.06	8.55	8.07	5.22	-5.54	2.28	10.20	1.25	-11.79	8.71	-1.29	-15.90	7.04
2013	3492.00	3428.00	3479.00	3505.00	3514.00	3451.00	3182.00	3571.00	3641.00	3878.00	3811.00	3469.00	-75.00
	-1.47	-1.83	1.49	0.75	0.26	-1.79	-7.79	12.23	1.96	6.51	-1.73	-8.97	-2.12
2014	3353.00	3537.00	3504.00	3594.00	3456.00	3595.00	3641.00	3592.00	3693.00	3763.00	3885.00	3524.00	55.00
	-3.34	5.49	-0.93	2.57	-3.84	4.02	1.28	-1.35	2.81	1.90	3.24	-9.29	1.59
2015	3378.00	3406.00	3411.00	3869.00	4306.00	4255.00	4232.00	4317.00	4514.00	4923.00	4897.00	4244.00	720.00
	-4.14	0.83	0.15	13.43	11.29	-1.18	-0.54	2.01	4.56	9.06	-0.53	-13.33	20.43
2016	3877.00	3929.00	4202.00	4472.00	4503.00	4848.00	4875.00	4681.00	4642.00	4498.00	4876.00	3974.00	604.00
	-8.65	1.34	6.95	6.43	0.69	7.66	0.56	-3.98	-0.83	-3.10	8.40	-18.50	14.23
2017	3834.00	3848.00	3908.00	3759.00	3483.00	3609.00	3699.00	3771.00	3739.00	3897.00	4104.00	3939.00	-35.00
	-3.52	0.37	1.56	-3.81	-7.34	3.62	2.49	1.95	-0.85	4.23	5.31	-4.02	-0.88
2018	4187.00	4125.00	4054.00	3795.00	3958.00	4027.00	4214.00	4070.00	4241.00	4170.00	3977.00	3929.00	-10.00
	6.30	-1.48	-1.72	-6.39	4.30	1.74	4.64	-3.42	4.20	-1.67	-4.63	-1.21	-0.25
2019	3983.00	3840.00	3750.00	3744.00	3718.00	3939.00	3950.00	3922.00	3954.00	4306.00	4321.00	4658.00	729.00
	1.37	-3.59	-2.34	-0.16	-0.69	5.94	0.28	-0.71	0.82	8.90	0.35	7.80	18.55
2020	4109.00	4000.00	4118.00	4141.00	4490.00	4650.00	5014.00	5410.00	5468.00	6067.00	5871.00	5817.00	1159.00
	-11.79	-2.65	2.95	0.56	8.43	3.56	7.83	7.90	1.07	10.95	-3.23	-0.92	24.88
2021	5604.00	5536.00	5682.00	6871.00									1054.00
	-3.66	-1.21	2.64	20.93									18.12
Average	-2.47	0.32	1.13	3.81	1.25	2.44	2.29	1.52	-0.27	5.41	0.88	-6.07	Average

SOYOIL PRICE MOVEMENT SINCE 2011

	JAN	FEB	MAR	APR	MAY	JUN	JUL	AUG	SEP	OCT	NOV	DEC	Growth
2011	658.60	628.40	599.65	626.50	660.95	634.50	661.85	660.75	614.10	618.20	634.65	733.50	100.95
	4.12	-4.59	-4.58	4.48	5.50	-4.00	4.31	-0.17	-7.06	0.67	2.66	15.58	15.33
2012	683.15	712.75	751.40	775.70	735.65	761.50	784.85	792.20	663.20	686.70	720.25	695.80	-37.70
	-6.86	4.33	5.42	3.23	-5.16	3.51	3.07	0.94	-16.28	3.54	4.89	-3.39	-5.52
2013	737.35	680.85	688.10	719.30	715.05	673.00	651.95	703.20	686.20	748.85	713.80	698.10	2.30
	5.97	-7.66	1.06	4.53	-0.59	-5.88	-3.13	7.86	-2.42	9.13	-4.68	-2.20	0.31
2014	683.55	716.65	705.45	718.50	676.60	693.45	676.60	610.65	614.00	599.85	576.80	638.05	-60.05
	-2.08	4.84	-1.56	1.85	-5.83	2.49	-2.43	-9.75	0.55	-2.30	-3.84	10.62	-8.79
2015	620.10	595.40	583.60	582.50	613.00	588.15	574.70	574.15	598.05	611.30	619.65	614.50	-23.55
	-2.81	-3.98	-1.98	-0.19	5.24	-4.05	-2.29	-0.10	4.16	2.22	1.37	-0.83	-3.80
2016	610.10	617.40	642.50	657.60	656.95	644.10	631.30	645.95	661.45	674.30	727.65	706.95	92.45
	-0.72	1.20	4.07	2.35	-0.10	-1.96	-1.99	2.32	2.40	1.94	7.91	-2.84	15.15
2017	686.10	664.35	623.10	610.85	622.80	641.90	657.35	664.05	664.70	686.10	746.45	727.50	20.55
	-2.95	-3.17	-6.21	-1.97	1.96	3.07	2.41	1.02	0.10	3.22	8.80	-2.54	3.00
2018	743.85	760.85	786.85	764.75	776.40	756.20	742.30	739.75	748.30	754.85	719.95	730.10	2.60
	2.25	2.29	3.42	-2.81	1.52	-2.60	-1.84	-0.34	1.16	0.88	-4.62	1.41	0.35
2019	775.80	756.85	728.75	740.05	755.30	745.10	733.90	755.05	764.50	773.65	814.40	933.20	203.10
	6.26	-2.44	-3.71	1.55	2.06	-1.35	-1.50	2.88	1.25	1.20	5.27	14.59	26.18
2020	851.20	767.60	828.00	787.20	785.20	799.10	864.70	892.90	904.10	963.40	1072.30	1190.10	256.90
	-8.79	-9.82	7.87	-4.93	-0.25	1.77	8.21	3.26	1.25	6.56	11.30	10.99	30.18
2021	1105.50	1192.40	1269.50	1360.70									170.60
	-7.11	7.86	6.47	7.18									15.43
Average	-1.16	-1.01	0.93	1.39	0.43	-0.90	0.48	0.79	-1.49	2.70	2.90	4.14	Average

CPO PRICE MOVEMENT SINCE 2011

	JAN	FEB	MAR	APR	MAY	JUN	JUL	AUG	SEP	OCT	NOV	DEC	Growth
2011	559.50	539.80	510.70	521.20	535.80	478.40	487.40	490.20	480.80	475.70	508.90	545.40	0.60
	2.70	-3.52	-5.39	2.06	2.80	-10.71	1.88	0.57	-1.92	-1.06	6.98	7.17	0.11
2012	514.20	536.20	592.30	621.50	585.90	566.40	564.40	551.60	446.20	425.20	423.20	417.90	-127.50
	-5.72	4.28	10.46	4.93	-5.73	-3.33	-0.35	-2.27	-19.11	-4.71	-0.47	-1.25	-23.38
2013	438.20	450.80	454.90	464.90	480.50	502.20	496.60	568.70	532.40	557.20	558.30	540.20	122.30
	4.86	2.88	0.91	2.20	3.36	4.52	-1.12	14.52	-6.38	4.66	0.20	-3.24	29.27
2014	524.00	590.00	569.70	567.70	524.90	535.00	539.10	439.60	474.50	457.20	439.50	460.60	-79.60
	-3.00	12.60	-3.44	-0.35	-7.54	1.92	0.77	-18.46	7.94	-3.65	-3.87	4.80	-14.74
2015	425.00	466.10	434.40	435.40	456.80	451.40	417.60	360.50	425.70	400.80	382.40	411.00	-49.60
	-7.73	9.67	-6.80	0.23	4.92	-1.18	-7.49	-13.67	18.09	-5.85	-4.59	7.48	-10.77
2016	432.50	481.90	532.20	564.00	537.00	506.80	524.70	559.10	581.60	514.90	554.70	582.70	171.70
	5.23	11.42	10.44	5.98	-4.79	-5.62	3.53	6.56	4.02	-11.47	7.73	5.05	41.78
2017	587.50	544.90	538.80	516.80	512.70	490.80	488.70	518.20	547.80	545.30	589.60	554.60	-28.10
	0.82	-7.25	-1.12	-4.08	-0.79	-4.27	-0.43	6.04	5.71	-0.46	8.12	-5.94	-4.82
2018	560.60	587.50	651.80	642.60	653.10	643.40	616.80	599.50	594.00	593.50	500.70	511.60	-43.00
	1.08	4.80	10.94	-1.41	1.63	-1.49	-4.13	-2.80	-0.92	-0.08	-15.64	2.18	-7.75
2019	569.40	550.10	525.90	529.70	519.30	515.80	513.60	522.20	546.60	587.90	680.00	795.20	283.60
	11.30	-3.39	-4.40	0.72	-1.96	-0.67	-0.43	1.67	4.67	7.56	15.67	16.94	55.43
2020	771.80	648.60	663.50	609.00	658.20	646.20	731.80	764.90	754.90	817.50	883.70	977.80	182.60
	-2.94	-15.96	2.30	-8.21	8.08	-1.82	13.25	4.52	-1.31	8.29	8.10	10.65	22.96
2021	969.30	1059.10	1076.30	1155.70									177.90
	-0.87	9.26	1.62	7.38									18.19
Average	0.52	2.25	1.41	0.86	0.00	-2.27	0.55	-0.33	1.08	-0.68	2.22	4.38	Average

KEDIA ADVISORY

KEDIA STOCKS & COMMODITIES RESEARCH PVT LTD.
Mumbai. INDIA.

For more details, please contact:
Mobile: +91 9323406035 / 9320096333 / 9619551022
Email: info@kediaadvisory.com
URL: www.kediaadvisory.com
SEBI REGISTRATION NUMBER - INH000006156

General Disclaimers: This Report is prepared and distributed by Kedia Stocks & Commodities Research Pvt Ltd. for information purposes only. The recommendations, if any, made herein are expression of views and/or opinions and should not be deemed or construed to be neither advice for the purpose of purchase or sale through KSCRPL nor any solicitation or offering of any investment /trading opportunity. These information / opinions / views are not meant to serve as a professional investment guide for the readers. No action is solicited based upon the information provided herein. Recipients of this Report should rely on information/data arising out of their own investigations. Readers are advised to seek independent professional advice and arrive at an informed trading/investment decision before executing any trades or making any investments. This Report has been prepared on the basis of publicly available information, internally developed data and other sources believed by KSCRPL to be reliable. KSCRPL or its directors, employees, affiliates or representatives do not assume any responsibility for, or warrant the accuracy, completeness, adequacy and reliability of such information / opinions / views. While due care has been taken to ensure that the disclosures and opinions given are fair and reasonable, none of the directors, employees, affiliates or representatives of KSCRPL shall be liable for any direct, indirect, special, incidental, consequential, punitive or exemplary damages, including lost profits arising in any way whatsoever from the information / opinions / views contained in this Report. The possession, circulation and/or distribution of this Report may be restricted or regulated in certain jurisdictions by appropriate laws. No action has been or will be taken by KSCRPL in any jurisdiction (other than India), where any action for such purpose(s) is required. Accordingly, this Report shall not be possessed, circulated and/ or distributed in any such country or jurisdiction unless such action is in compliance with all applicable laws and regulations of such country or jurisdiction. KSCRPL requires such recipient to inform himself about and to observe any restrictions at his own expense, without any liability to KSCRPL. Any dispute arising out of this Report shall be subject to the exclusive jurisdiction of the Courts in India.